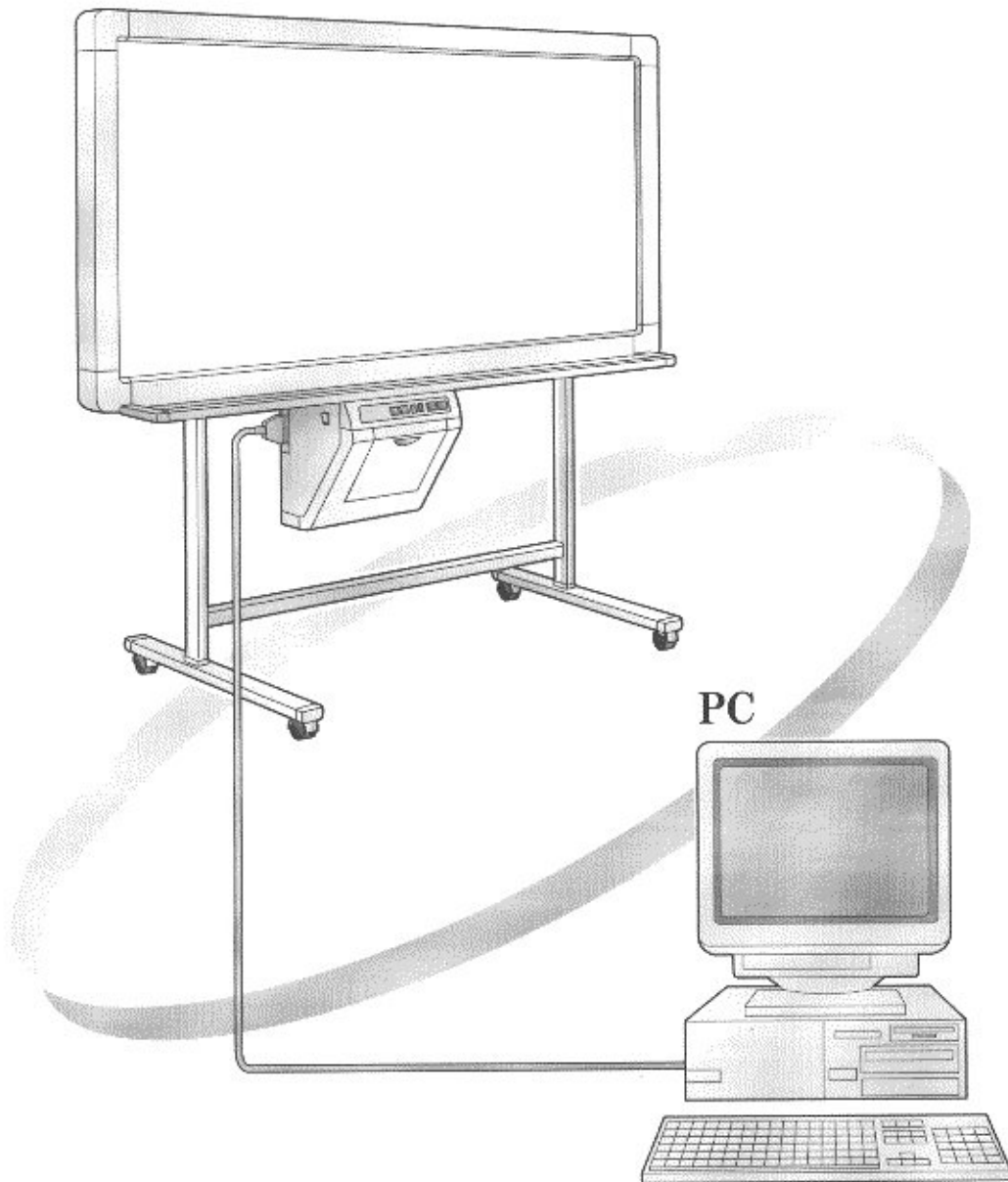


Panasonic

PC Interface Kit Operating Instructions

Model No. **KX-BP095**
KX-BP095U

Electronic Print Board



- Before using the PC Interface Kit, please read these instructions completely.

Thank you for purchasing Panasonic's KX-BP095/BP095U PC Interface Kit.

This PC Interface Kit is an optional software product used to scan images from the KX-BP735/BP635/BP535 series Electronic Print Board into a PC running Microsoft® Windows® or Windows NT® and print documents on the PC to an Electronic Print Board Printer.

In order to use the PC Interface Kit, you will need the KX-BP735/BP635/BP535 series Electronic Print Board and an IBM® -PC/AT or compatible machine.

Trademarks

- IBM® is a registered trademark of International Business Machines Corporation.
- Microsoft®, Windows® and Windows NT® are registered trademarks of Microsoft Corporation in the United States and/or other countries.
 - Windows® 3.1 is Microsoft® Windows® operating system Version 3.1.
 - Windows® 95 is Microsoft® Windows® 95 operating system.
 - Windows® 98 is Microsoft® Windows® 98 operating system.
 - Windows NT® means Microsoft® Windows NT® Workstation operating system or Microsoft® Windows NT® Server network operating system.
 - Windows® 2000 means Microsoft® Windows® 2000 Professional operating system, Microsoft® Windows® 2000 Server operating system or Microsoft® Windows® 2000 Advanced Server operating system.
- Accusoft is a trademark of Accusoft Corporation.
- All trademarks referred to in this manual are the property of their respective companies.

Federal Communications Commission Requirements

(For United States only)

Note : This equipment has been tested and found to comply with the limits for a Class A digital device, pursuant to part 15 of the FCC Rules. These limits are designed to provide reasonable protection against harmful interference when the equipment is operated in a commercial environment. This equipment generates, uses, and can radiate radio frequency energy and, if not installed and used in accordance with the instruction manual, may cause harmful interference to radio communications. Operation of this equipment in a residential area is likely to cause harmful interference in which case the user will be required to correct the interference at his own expense.

FCC Warning : To assure continued FCC emission limit compliance, use only the the provided shielded interface cable with ferrite cores when connecting this device to a computer.

This device complies with Part 15 of the FCC Rules. Operation is subject to the following two conditions: (1) This device may not cause harmful interference, and (2) this device must accept any interference received, including interference that may cause undesired operation.

Table of Contents

	Page		Page
To connect the Interface Board ...	4	2-3. Panaboard Control Dialog Box ...	12
Before Using the Software	5	PC Interface Operation	15
1-1. What is the PC Interface?	5	3-1. Startup	15
1-2. What is the TWAIN Driver?	5	3-2. Electronic Print Board Scanning	15
1-3. What is the Printer Driver?	5	3-3. Saving Image Files	16
1-4. Confirming Parts	5	3-4. Opening Image Files	17
1-5. System Configuration	5	3-5. Printing Images	17
1-6. Connecting to the PC	6	3-6. Preferences	18
1-7. Installing the PC Interface Software	6	● Zoom Ratio	18
1-8. Installing the TWAIN Driver.....	7	● Catalog Size	18
1-9. Installing the Printer Driver	8	● Print	18
● Special Note for Windows 95/98 ...	9	● Filing: Auto Save Mode	18
PC Interface Basics	10	3-7. Exiting	18
2-1. Initial Screen	10	Using the TWAIN Driver	18
2-2. Menu Configuration	10	Using the Printer Driver	19
		● For Windows NT 4.0	19

Notes

- Bitmap is an image file format of Microsoft Corporation.
- TIFF is an image file format of Aldus Corporation and Microsoft Corporation.
- Portions of this product are copyrighted by Microsoft Corporation and Accusoft Corporation.
- The information in this manual is subject to change without notification and does not present a commitment on the part of Matsushita Electric Industrial Co., Ltd. or its operating companies.
- The software described in this manual is furnished under a license agreement and may not be copied or reproduced without the express written consent of the manufacturer.
- The product should be used only with the cable that is supplied by the manufacturer.
- Other than for back-up purposes, neither this manual nor this software may be copied, in whole or in part, without the express written consent of the manufacturer.

Warning about saving memory data

When this system's memory device or any of its optional memory devices is adversely effected by operational errors, static electricity, electrical noise, vibration, dust or when the power has been cut off due to malfunction, repair or inadvertently, the memory contents may be lost or changed. Before operating the system, make a point of reading the precautionary notes in this Operating Instructions and observe them during operation.

Please observe carefully the following precaution:

- Make absolutely sure that all important data are saved by back-up or the original is saved.

The manufacturer hereby declares that it cannot be held accountable for any loss or change in any data stored on floppy disks, hard disks, optical disks, or other memory devices.

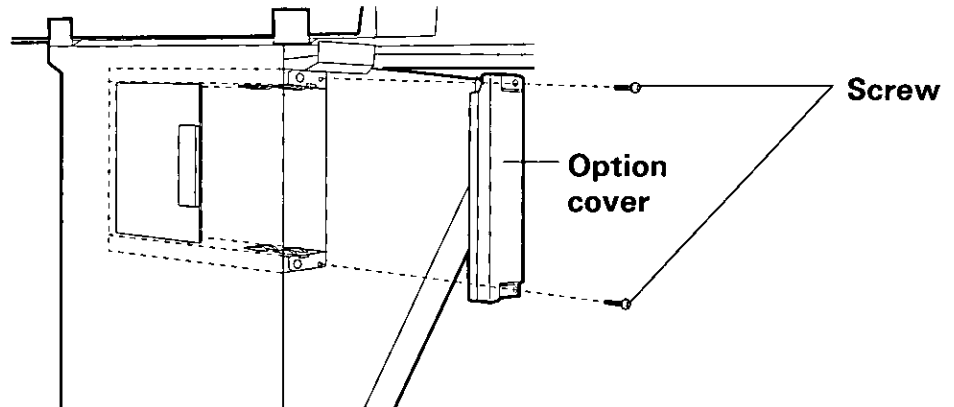
Information in this manual is subject to change without notice.

To connect the Interface Board

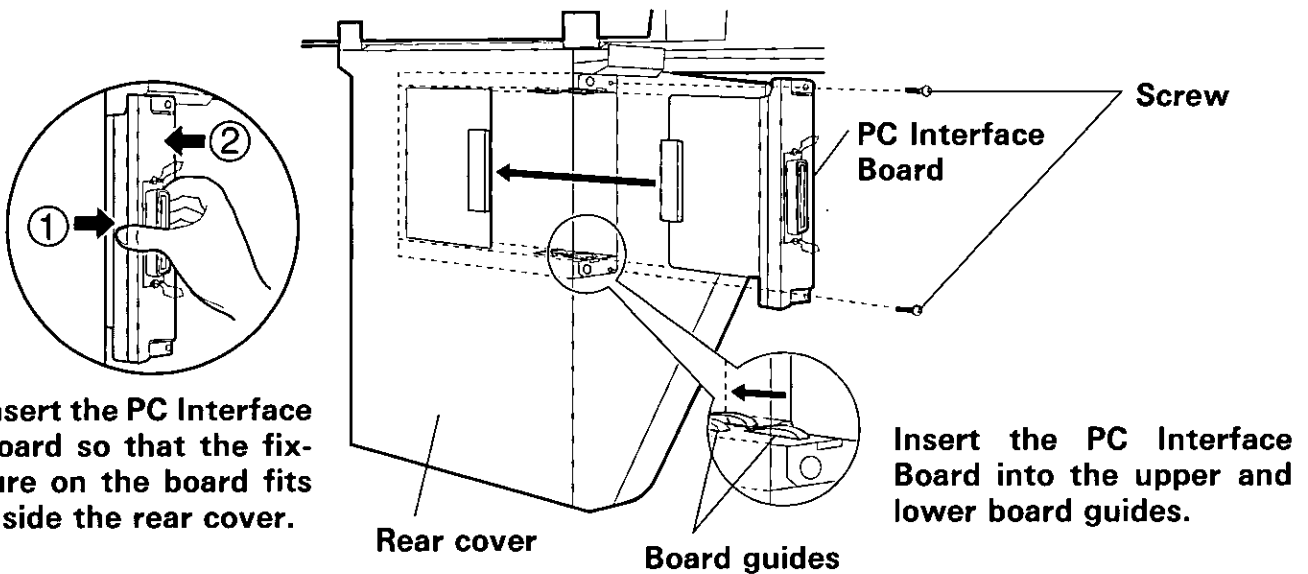
1 Turn off the power switch of the Electronic Print Board, and unplug the power cord from it.

2 Remove the two screws and the option cover.

- The removed screws will be re-used in step 3.
- The option cover should be saved just in case the Interface Board is removed, to cover the opening.



3 Insert the PC Interface Board into the upper and lower board guides.



Before Using the Software

1-1. What is the PC Interface?

PC Interface provides the following functions:

- The screen feed and copy functions of the KX-BP735/BP635/BP535 series Electronic Print Board can be operated from the PC.
- It scans, displays and saves (in the BMP or TIFF file format) the images which have been written on the screen of the KX-BP735/BP635/BP535 series Electronic Print Board.
- It opens (in the BMP or TIFF file format) and displays the images which have been saved.
- It displays the images in magnified or reduced sizes, and rotates the image display.
- It displays the next and previous pages and any page from the page catalog list.
- It prints the images which have been saved.

1-2. What is the TWAIN Driver?

TWAIN Driver provides the following functions:

- It makes it possible to scan the images which have been written on the screen of the KX-BP735/BP635/BP535 series Electronic Print Board from an application that supports TWAIN.

1-3. What is the Printer Driver?

Printer Driver provides the following functions:

- It is possible to print to the KX-BP735/BP635/BP535 series Electronic Print Board from an application software being used on the computer.

1-4. Confirming Parts

Please confirm that you have all of the items listed below.

- PC Interface Board ... 1
- PC Interface Software floppy disks ... 3
 - For Windows 3.1 ... 1
 - For Windows 95/98/NT 3.51/NT 4.0/2000 ... 2
- TWAIN Driver floppy disk for Windows 95/98/NT 4.0/2000 ... 1
- Printer Driver floppy disk for Windows 95/98/NT 4.0/2000 ... 1
- Interface Cable ... 1
- Operating Instructions ... 1
- Installation Manual (KX-BP095U only) ... 1
- Software License Agreement ... 1
- Registration Card (KX-BP095 only) ... 1

Please contact your place of purchase if you find that you are missing any of these items.

1-5. System Configuration

- A computer with the following system environment is required to run the PC Interface Software.

Computer:	IBM-PC/AT or compatible machine with a 3.5" 1.44MB floppy disk drive
Software:	DOS 5.0 (or higher) and Windows 3.1x or Windows 95, Windows 98 or Windows NT 3.51 with Service Pack 5 (or higher) or Windows NT 4.0 or Windows 2000
Memory:	At least 2MB free memory
Hard disk:	At least 2MB free memory

Before Using the Software

- A computer with the following system environment is required to run the TWAIN Driver or the Printer Driver.

Computer:	IBM-PC/AT or compatible machine with a 3.5" 1.44MB floppy disk drive
Software:	Windows 95, Windows 98 or Windows NT 4.0 or Windows 2000
Memory:	At least 1MB free memory
Hard disk:	At least 1MB free memory

Verify that all system components are connected and that the system is in proper working order.

1-6. Connecting to the PC

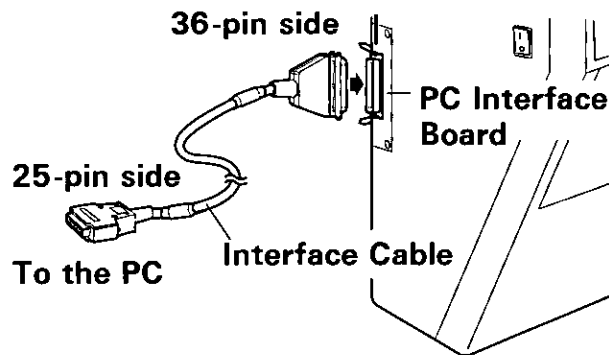
Be sure to turn off the Electronic Print Board and PC before you connect or take off the Interface Cable.

- (1) Installing the PC Interface Board

For details, see "To connect the Interface Board" on page 4.

- (2) Connecting the supplied Interface Cable

Connect the 36-pin Centronics interface cable connector to the PC Interface Board and the other 25-pin D-Sub connector to the computer's printer port.



- Note:** ● This is a proprietary PC Interface Cable for connecting the Electronic Print Board with a PC.
Be sure to always use the supplied cable. Never use it with any other products.

1-7. Installing the PC Interface Software

The setup program provided by the PC Interface Software performs all the tasks necessary for installing the PC Interface Software components. You can install everything at once.

- (1) Start up Windows.

- Logon as the administrator when using Windows NT 3.51/NT 4.0/2000.

- (2) Insert the program floppy disk into the floppy disk drive.

- For Windows 3.1 - insert the floppy disk labeled (for Windows 3.1).

- For Windows 95/98/NT 3.51/NT 4.0/2000 - insert the first floppy disk labeled (for Windows 95/98/NT/2000 DISK # 1/2).

- (3) For Windows 3.1/NT 3.51,
Click **File** in the Program Manager, and click **Run** on the File menu.
For Windows 95/98/NT 4.0/2000.
Click the **Start** button, and click **Run** on the Task Bar menu.
- (4) Type "A:\SETUP" in the Command Line text box, and click **OK**.
 - For KX-BP095U - click the language button to select the language.
- (5) Input the drive and path name where the PC Interface will be installed or press **Enter** to select "C:\BPx35PC" which is the default.
 - To quit setup, click **Exit Setup**.
 - For Windows 95/98/NT 3.51/NT 4.0/2000 - replace the second floppy disk labeled (for Windows 95/98/NT/2000 DISK # 2/2) according to the instructions on the screen.

[For Windows 3.1/NT 3.51]

When the installation of the PC Interface is completed, the group for the Panaboard BPx35 PC-Interface will be displayed in the Program Manager, and the PC Interface icon will appear in this group.

[For Windows 95/98/NT 4.0/2000]

When the installation of the PC Interface is completed, the group for the Panaboard BPx35 PC-Interface will be entered in the Program menu.

- Note:**
- For Windows NT 3.51 - it is necessary to install "Service Pack 5" or higher. You are able to download "Service Pack 5" for Windows NT 3.51 from the Microsoft Corporation Home Page of the Internet.
 - For Windows NT 3.51/NT 4.0/2000 - restart the computer before using the PC Interface Software.

■ Uninstalling the PC Interface Software

- For Windows 3.1 - there is not an uninstaller utility. Please delete the directory where the PC Interface was installed and the group for Panaboard BPx35 PC-Interface in the Program Manager.
- For Windows NT 3.51 - double-click the Uninstaller icon within the Panaboard BPx35 PC-Interface Program Group.
- For Windows 95/98/NT4.0/2000 - click the **Start** button, and then click **Panaboard BPx35 PC-Interface Uninstaller** in Panaboard BPx35 PC-Interface under Programs.

1-8. Installing the TWAIN Driver

To scan the images which have been written on the screen of the KX-BP735/BP635/BP535 series Electronic Print Board using a TWAIN compliance application software, it is necessary to install the contents of the included floppy disk onto the PC.

- (1) Start up Windows.
 - Logon as the administrator when using Windows NT 4.0/2000.
- (2) Insert the TWAIN Driver floppy desk into the floppy disk drive.

Before Using the Software

(3) Click the **Start** button, and click **Run** on the Task Bar menu.

(4) Type "A:\SETUP" in the Command Line text box, and click **OK**.

Note: For Windows NT 4.0/2000 - restart the computer before using the TWAIN Driver.

■ Uninstalling the TWAIN Driver

Click the **Start** button, and then click **Control Panel** under Settings. Double-click the "Add/Remove Programs" icon, select "Panaboard Bx30/BPx35 TWAIN Driver" which has been registered, and click the **Add/Remove** button.

1-9. Installing the Printer Driver

To print to the KX-BP735/BP635/BP535 series Electronic Print Board printer, it is necessary to install the contents of the included floppy disk onto the PC.

(1) Start up Windows.

- Logon as the administrator when using Windows NT 4.0/2000.

(2) Click the **Start** button.

(3) Click on **Settings** and then click **Printers** on the Task Bar menu.

(4) When the "Printers" window appears, double click on the "Add Printer" icon.

(5) Follow the on-screen instructions when the "Add Printer Wizard" executes.

- When the screen for selecting manufacturer and printer appears, insert the Printer Driver floppy disk into the floppy disk drive, and click the **Have Disk** button.

When the screen for installing from disk appears, enter the following in "Copy manufacturer's files from", and click **OK**.

- Windows 95/98, English, Paper size A4 "A:\English\Win95-98\A4"
- Windows 95/98, English, Paper size Letter "A:\English\Win95-98\Letter"
- Windows 95/98, German, Paper size A4 "A:\German\Win95-98"
- Windows NT 4.0/2000, English, Paper size A4 "A:\English\WinNT-2000\A4"
- Windows NT 4.0/2000, English, Paper size Letter "A:\English\WinNT-2000\Letter"
- Windows NT 4.0/2000, German, Paper size A4 "A:\German\WinNT-2000"

Note: ● When using Windows 95 or Windows 98, a floppy disk or CD-ROM for installing the operating system will also be necessary. (See page 9.)

- When the printer driver installation is completed, the printer having the printer name set in the printer window will be added.
The default printer name is "Panaboard BPx35 Printer".

■ Deleting the Printer Driver

Click on the printer set during installation in the "Printers" window, then click **Delete** on the File menu.

■ Special Note for Windows 95/98

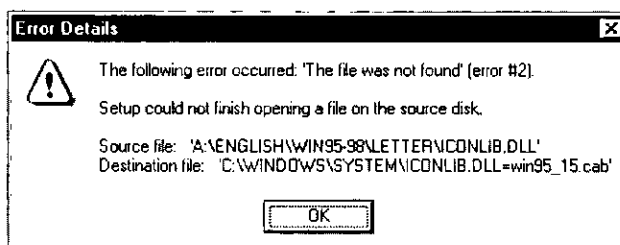
If your PC had Windows 95/98 pre-installed and the original Windows 95/98 CD-ROM or diskettes were not included. In this situation, please try to locate the necessary files by following the methods described below or refer to your PC's User's Guide for more details.

● Method-1: Specify the Windows 95/98 backup file location in the hard disk of your PC.

Generally, the Windows 95/98 backup files are located in the "WINDOWS\OPTIONS\CABS" folder. Type "C:\WINDOWS\OPTIONS\CABS" in the Copy files from box on the Copying Files dialog box, where "C:" is your Windows 95/98 boot drive and then click the OK button.

If the necessary files are found, the installation will proceed.

Otherwise, click the Details button, a dialog box appears as shown below including the cabinet file name (*.cab listed under the Description File) that contains the necessary file.



In this example, the cabinet file name is "win95_15.cab". (Note that the cabinet file name may vary depending on your PC.)

To search for the file in your PC

- (1) Click the Start button on the Task Bar and then click on Find .
- (2) A dialog box appears prompting for a file name to be searched, type "WIN95_*.CAB" or "WIN98_*.CAB" in the Name box, type "C:\" in the Look in box and check the box for Include subfolder .
- (3) Click the Find Now button. When the cabinet file is found, make a note of the folder name where the file is located.
- (4) Return to the Copying Files dialog box and type the folder name in the Copy files from box. For example, type "C:\WINDOWS\OPTIONS\CABS". Then click the OK button.

● Method-2: Create the Windows 95/98 backup diskettes and then specify the diskettes.

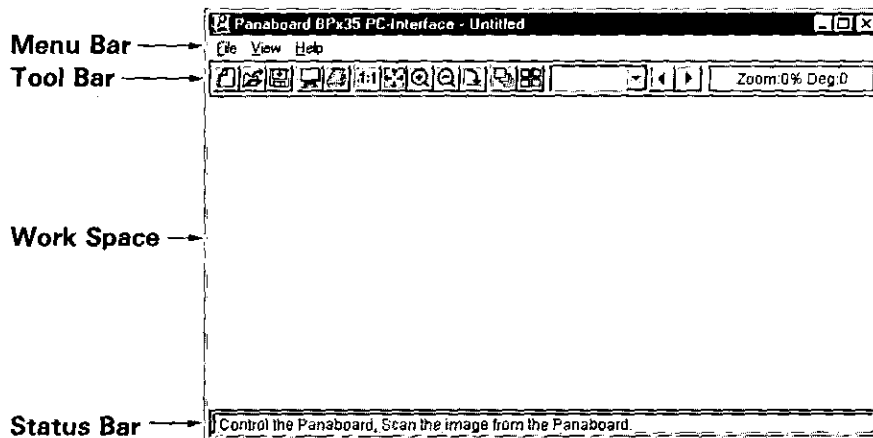
Depending on the PC, there is usually a tool from the manufacturer to create the Windows 95/98 backup diskettes in a Windows 95/98 pre-installed system. Please refer to your PC's User's Guide for more details on this tool.

Create the Windows 95/98 backup diskettes by using this tool, and then install the Printer Driver by following the procedures from Step (1).

PC Interface Basics

2-1. Initial Screen

The screen shown below appears when the PC Interface Software is activated.



- Menu Bar:** Provides available menus within the PC Interface Software.
Tool Bar: Contains the buttons for performing the same operations as on the menus, the page number of the image now displayed, display magnification and display angle. For a more detailed description, see pages 10 to 11.



- Work Space:** Displays the images which have been scanned or opened or dialog boxes.
Status Bar: Displays the operating condition of the PC Interface Software.

2-2. Menu Configuration

The following menus can be used with the PC Interface Software.







With menus providing pictures of buttons, the same operations can be performed simply by clicking the buttons on the Tool Bar.

File

- | | | |
|--|---------------------------|---|
| | New: | To clear the image displayed or to create a new image file. |
| | Open: | To open an image file. |
| | Save: | To save the image displayed. |
| | Save As: | To save the image displayed changing the file name and type. |
| | Panaboard Control: | To operate the Electronic Print Board and scan the image from the Electronic Print Board. |
| | Print: | To print the images displayed. |
| | Preferences: | To set the PC Interface Software environment. |
| | Exit: | To exit the PC Interface Software. |

View

- | | | |
|--|---------------------------|--|
| | Actual Size: | To display images in their actual size. |
| | Fit Window: | To display the whole image so that it fits the size of the window. |
| | Zoom In
[125%]: | To magnify the image displayed. [125%] displays the current magnified rate which can be varied in "Preferences". |

-  **Zoom Out [80%]:** To reduce the image displayed. [80%] displays the current reduction rate which can be varied in "Preferences".
-  **Rotate 90:** To rotate the displayed image clockwise in 90-degree increments.
-  **Catalog:** To display the pages in the form of a catalog. When displaying the page(s) in the form of a catalog, the "√" mark will appear on the View menu next to "Catalog".
-  (Page): In order to display in the form of a page, select "Catalog" again to make the "√" mark disappear.
- (Select Page): To display the selected page.
-  **Previous Page:** To display the previous page.
-  **Next Page:** To display the next page.

Help

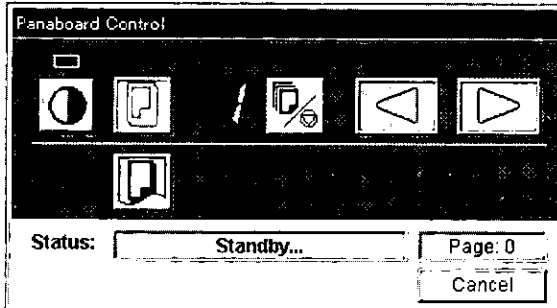
- Contents:** To display help information.
- About:** To display information about the PC Interface Software.

PC Interface Basics

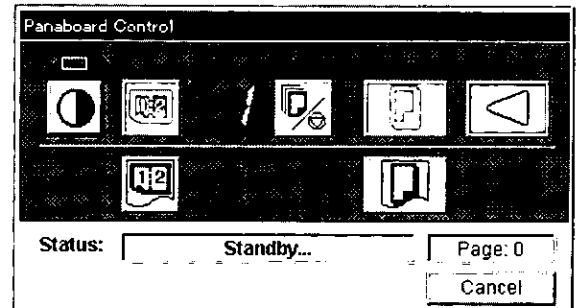
2-3. Panaboard Control Dialog Box

When "Panaboard Control" is selected on the File menu, the Panaboard Control dialog box appears. The following details are displayed in this box.

<KX-BP735>



<KX-BP635 / BP535>









- Status:** Displays the PC Interface status.
- **Standby:** Indicates that the Electronic Print Board is in standby mode, the Electronic Print Board can be operated from the board itself and from the PC Interface Software.
 - **Rotating:** Indicates that the Electronic Print Board is rotating the screen.
 - **Copying:** Indicates that the Electronic Print Board is copying the screen.
 - **Scanning:** Indicates that the Electronic Print Board is now scanning the screen.
 - **Receiving:** Indicates that scanned images are being transferred from the Electronic Print Board to the computer.
A bar is used to indicate progress status.
 - **Converting:** Indicates that the image data is being converted so that the computer will be able to display the scanned data.
 - **Busy:** Indicates that the Electronic Print Board is busy.
 - **Error:** Indicates that an error has occurred with the Electronic Print Board.
 - **Power Off:** Indicates that the Electronic Print Board is turned off.
- Page:** Displays the number of scanned image pages.
- Cancel / OK:** Click to close the Panaboard Control dialog box.
- This functions as **Cancel** before a single page has been scanned.
 - This functions changes to **OK** when the page has been scanned.
 - This functions as the **Cancel** during Electronic Print Board scanning or image data transfer. When **Cancel** is clicked during Electronic Print Board scanning or image data transfer, the page being scanned is canceled and scanning is suspended. The images scanned until that point remain valid.


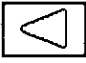




■ About the Control Panel

It is possible to perform the same operations as with the Electronic Print Board control panel from the following Panaboard Control buttons.

Note: While the Panaboard Control dialog box is displayed, the copy key and 2-screen copy key on the Electronic Print Board control panel are used for scanning images into the PC.

Name	Panel	Description
① Contrast/ Remaining Film Indicator		<p>When displayed, this indicator shows the contrast during scanning or copying and indicates when the thermal transfer film should be replaced.</p> <p>Indicator off: Normal scanning or copying contrast. Indicator on: Darker than normal scanning or copying contrast.</p> <p>Indicator flashing: Almost time to replace the thermal transfer film. (Note that only about 15 more copies may be made when this indicator starts flashing.)</p>
② Contrast Button		<p>Each time this button is pressed, the unit will alternate between normal and dark contrast modes (Normal / Dark).</p>
③ 2-Screen Scan Button		<p>For the KX-BP535 and KX-BP635 only:</p> <ul style="list-style-type: none"> ● This button causes both screens to be scanned in a single page.
④ Scan Button	  (KX-BP735)	<p>This button causes the screen to be scanned.</p>
⑤ Multi-Copy /Error Indicator		<p>This indicator displays the number of copies to be made. The display changes each time the multi-copy/stop button is pressed.</p> <p>For the KX-BP535 and KX-BP635: Example: 1 → 2 → ... → 9 → 1 → ...</p> <p>For the KX-BP735: Example: 1 → 2 → ... → 9 → // → 1 → ... ("//" is used by the KX-BP735 to indicate 4-screen continuous scanning or copying.)</p> <p>When an error occurs, a flashing symbol will appear in this display to indicate the error status.</p>


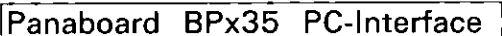
PC Interface Basics

Name	Panel	Description
⑥ Multi-Copy /Stop Button		<p>When making multiple copies, press this button until the desired number of copies is displayed on the multi-copy/error indicator. This button can also be pressed while multiple copies are being made to stop the copying process.</p> <p>For the KX-BP735 only:</p> <ul style="list-style-type: none"> ● For 4-screen continuous scanning or copying, keep pressing the key until "!!" appears in the multi-copy/error indicator. Also press the button to stop 4-screen continuous scanning or copying at any time. ● During scanning, the setting 1 to 9 for the number of copies is ignored.
⑦ Advance Button		<p>This button advances the screen from right to left.</p> <p>For the KX-BP735 only:</p> <ul style="list-style-type: none"> ● Pressing this button twice will cause the screen to advance two screens from right to left.
⑧ Reverse Button		<p>For the KX-BP735 only:</p> <ul style="list-style-type: none"> ● This button advances the screen from left to right. ● Pressing this button twice will cause the screen to advance two screens from left to right.
⑨ 2-Screen Copy Button		<p>For the KX-BP535 and KX-BP635 only:</p> <ul style="list-style-type: none"> ● This button causes both screens to be copied on a single sheet of paper.
⑩ Copy Button	  (KX-BP735)	<p>This button causes the screen to be copied.</p>




※ See the operating instructions provided with the Electronic Print Board for the specific operating procedures.

PC Interface Operation

3-1. Startup

- (1) Turn on the power of the Electronic Print Board.
- (2) Turn on the computer's power and start up Windows.
- (3) For Windows 3.1/NT 3.51, double-click the Panaboard BPx35 PC-Interface Program Group, then double-click the Panaboard PC Interface icon within the group.
For Windows 95/98/NT 4.0/2000, click the  button, and then click  in Panaboard BPx35 PC-Interface under Programs.
- (4) The PC Interface Software's initial screen now appears on the computer screen.

3-2. Electronic Print Board Scanning


- (1) Check whether or not the multi-copy/error indicator for the Electronic Print Board is "1" through "9" or "!!" (KX-BP735 only).
- (2) Click  on the Tool Bar.
- (3) The Panaboard Control dialog box now appears. Check that it is in the "Standby" status.
 - The Panaboard Control dialog box will not appear when the Electronic Print Board is not ready.
- (4) Click  or  (KX-BP635/BP535 only) in the Panaboard Control dialog box.
 - It is also possible to start scanning in image data using the copy key or 2-screen copy key (KX-BP635/BP535 only) on the Electronic Print Board control panel.
- (5) The status of the Panaboard Control dialog box now changes to "Scanning" and the Electronic Print Board starts scanning.
- (6) Then, the status of the Panaboard Control dialog box changes to "Receiving" and transfer of the image data from the Electronic Print Board to the computer now commences.
 - While the image data is transferred, the Progress bar appears to indicate the progress made in the transfer of the image data.
 - The Electronic Print Board's multi-copy/error indicator flashes while the image data is being transferred from the Electronic Print Board to the computer.
- (7) On completion of the image data transfer, the status of the Panaboard Control dialog box changes to "Converting". The pages are then counted, and the scanned images are displayed on the screen. If the display is completed normally, operation returns to step (3), and the status of the Panaboard Control dialog box changes to "Standby".
- (8) To scan data again, repeat the procedure outlined above from step (4).

PC Interface Operation

- (9) To exit scanning, click **OK** button in the Panaboard Control dialog box.
- When set to **Auto Save Mode**, the **Save As** dialog box will appear automatically if there is not an active file displayed with filename, then the file should be saved. (For further details about saving image files, see 3-3.)

- Note:**
- When a new image file is to be created, click "New" on the File menu before scanning, and create the new file.
 - While scanning, please do not drag the Panaboard Control dialog box as this may interfere with the scanning process.
 - While scanning, please do not operate any other application software as this may interfere with the scanning process.
 - The keys on the Electronic Print Board will not operate until the multi-copy/error indicator display changes to " / " after scanning.

3-3. Saving Image Files

- (1) Click  on the Tool Bar.

- **BMP File** - can only contain 1 Scanned Image. (1 Page)
- **TIFF File** - can contain multiple Scanned Images.
- When saving the Scanned image to the active image displayed and already named,

For (BMP) - Scanned images are added with the same filename as the one displayed and (01-99) is added sequentially to the end of that name. (Separate Files)
The Save As dialog box will not appear.

For (TIFF) - Scanned images are added to the image file now displayed. (Multi-page TIFF: 99 pages maximum) The Save As dialog box will not appear.

- (2) The Save As dialog box now appears. Set the file format, folder in which the file is to be saved, and the filename.
- When saving the scanned image to the selected image, the image will be added to that file. The Save As dialog box will not appear.
 - For BMP Files, add the extension ".BMP" to the filename.
For Windows 3.1 - because the last two characters of the eight-character filename are used for the page number, only the first six characters can be used for the filename.
For Windows 95/98/NT 3.51/NT 4.0/2000 - the long filename can be used.
 - For TIFF Files, add the extension ".TIF" to the filename.
For Windows 3.1 - the filename is up to eight characters.
For Windows 95/98/NT 3.51/NT 4.0/2000 - the long filename can be used.

- (3) Click **Save**.

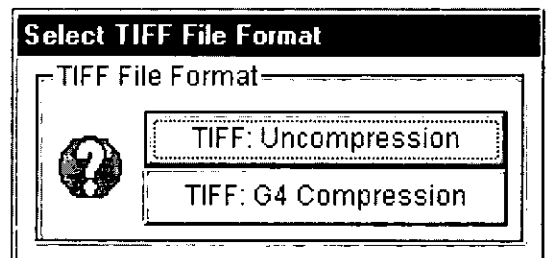
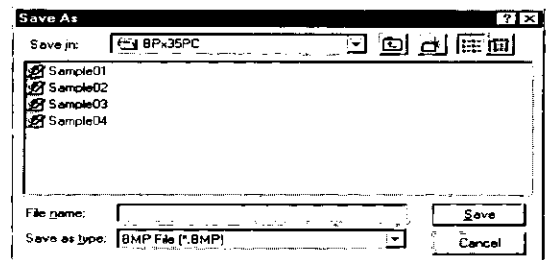
- Note:**
- For BMP or Uncompressed TIFF File Format, the file size per one page is about 420KB. Therefore you may save about 3 pages in 1.44MB floppy disk.
 - In order to use the image file in another application software, it is required that the image file be saved in a file format which is suitable for that application software.
 - The saved image file is a monochrome image.

When the TIFF File is selected:


- (4) The TIFF File Compression dialog box now appears.

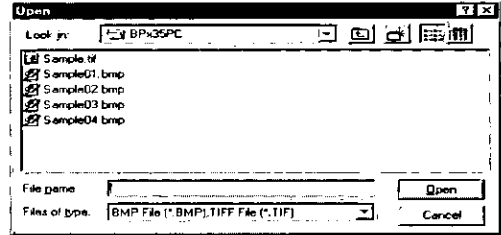
When it is not necessary to compress, click **TIFF:Uncompression**.

To compress, click **TIFF:G4 Compression**.




3-4. Opening Image Files

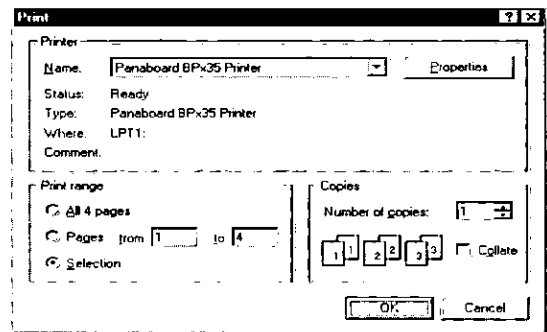
- (1) Click  on the Tool Bar.
- (2) The Open dialog box now appears. Set the file format, folder in which the file is saved, and the filename.
After opening the image file, another page can also be displayed by selecting the Previous/Next Page on the View menu.
- (3) Click .



Note: When the page number for BMP file(s) is not sequentially numbered from "01", the file name is changed and the pages are restructured automatically.

3-5. Printing Images

- (1) Open the image file.
- (2) Click  on the Tool Bar.
- (3) The Print dialog box now appears.



- Printer:** The current printer selection appears.
- Print range:** To designate the range of pages for printing.
 - All:** To print all the pages of the displayed image file.
 - Pages:** To print the desired pages of the displayed image file.
 - Selection:** To print only the displayed page.
- Number of copies:** To designate the number of copies.
- Collate:** When this is selected, it prints in page order.

- (4) Click .
 - Click to stop printing.
 - If you click , the Printer Setup dialog box appears.

The contents of the Printer Setup dialog box varies with different printers. Refer to the manual of the printer.

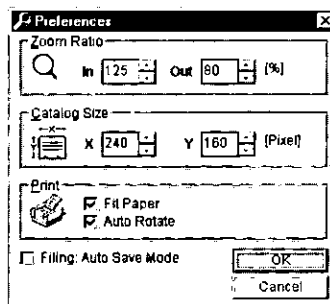
Note: Be sure to turn off the Electronic Print Board and PC before you remove the proprietary PC Interface Cable and reconnect the PC's Printer Cable.

PC Interface Operation

3-6. Preferences

This sets the environment.

The figure shown here displays the default settings.



■ Zoom Ratio

This enables the magnifications for Zoom In (MIN : 100 [%]—MAX : 200 [%]) and Zoom Out (MIN : 50 [%]—MAX : 100 [%]) to be set.

■ Catalog Size

This enables the horizontal/vertical size (MIN : 100 [Pixel]—MAX : It varies with different size of windows.) of the catalog to be set.

- When the catalog size is reduced, more pages can be displayed in catalog form at one time but the images on those pages will be reduced in size, making it harder to see them.

■ Print

Fit paper: When this is selected, the image is printed out to fit the size of a paper set on a printer.

Auto Rotate: When this is selected, the image automatically rotates to fit the direction of paper set in a printer. When selected, this will override the printer drivers paper direction setting to fit image direction. This can work only if Fit Paper is selected.

■ Filing: Auto Save Mode

When this is selected, if there is not an active image with filename displayed, the Save As dialog box will appear automatically after the Panaboard Control dialog box is closed so that the New scanned image(s) can be saved.

When this is selected, if there is an active image with filename displayed, the Scanned image(s) are automatically added with that filename (BMP-Separate Files) or to the existing file (TIFF-Multi-page). The Save As dialog box will not appear.

3-7. Exiting

(1) Click **File** on the menu bar.

(2) Click **Exit** on the File menu.

Using the TWAIN Driver

Select "Panaboard Bx30/BPx35 TWAIN Driver" when using the TWAIN driver installed from the application which supports TWAIN and which you are using in your computer. Normally, when "Select Source" is clicked from the file menu, a list of the TWAIN drivers that can be used is shown so select one of the drivers displayed on the screen.

- The KX-BP735's 4-screen continuous scanning function cannot be used if the TWAIN driver is to be used.

Using the Printer Driver

When printing to the Electronic Print Board printer from an application software used on the PC, select the print menu from within the application software and on the print dialog box displayed, select the printer name set during installation. The default printer name is "Panaboard BPx35 Printer".

- The multi-copy/error indicator on the Electronic Print Board will flash during printing. After printing begins, the Electronic Print Board keys do not function until the multi-copy/error indicator is illuminated.

- Note:**
- Printing is not possible while the Panaboard Control dialog box of the PC Interface Software (see P.12) is displayed.
 - This printer driver does not correspond to the "Pause Printing" command in the Print Manager. Please do not execute "Pause Printing".
 - The maximum number of copies which may be printed is 9. Do not set this field higher than 9.
 - The output tray of the Electronic Print Board can hold up to 20 sheets of printed paper. (Paper jams may occur if 20 sheets are exceeded.)
 - The print density cannot be controlled with the contrast key on the Electronic Print Board control panel.
 - If printing data with a lot of black area, continuously printing irregular density and/or white streaks may appear on the output paper. In this case, please wait for a while and re-print.

■ For Windows NT 4.0

You will need to change the printer driver settings as described below in order to use the printer driver under Windows NT 4.0 if you find it does not print after installation.

- (1) Click on the Windows NT 4.0 **Start** button.
- (2) Click on **Settings** and then click **Printers** on the Task Bar menu.
- (3) The "Printers" window will appear. Double-click on the printer name that was set during installation (default: Panaboard BPx35 Printer).
- (4) Click on **Purge Print Documents** on the **Printer** menu to delete all unprinted documents.
- (5) Click on **Properties** on the **Printer** menu.
- (6) The "Printer Properties" window will appear. Click on **Print Processor** on the **General** tab.
- (7) The "Print Processor" window will appear. Check "Always spool raw data" by clicking on it, and then click **OK**.
- (8) Click on the **Scheduling** tab of the "Printer Properties" window and click "Start printing after last page is spooled".
- (9) Close the "Printer Properties" window by clicking on **OK**.
- (10) Restart Windows NT.

Note: The above settings are enabled the next time Windows NT is started.

This Operating Instructions are printed on recycled paper.

Panasonic Document Imaging Company
A Division of Matsushita Electric Corporation of America
Two Panasonic Way, Secaucus, New Jersey 07094

Panasonic Canada Inc.
5770 Ambler Drive, Mississauga, Ontario, L4W 2T3

Matsushita Electric Industrial Co., Ltd.
Central P. O. BOX 288, Osaka 530-91, Japan



Printed in Japan

K0999S1040
PBQX50252YA